

## HOME DESIGNING SERVICE, LTD.

Date: February 2009

# Feature Plan

And This Month's Special Promotion



### *Winter Special Promotion*

### *Recieve 50% off a Rendering with Purchase of a Stock Plan*

Stop into our plans showroom anytime during our business hours and browse through our stock plan library of over 3,000 plans. When you make a purchase of 6 or more sets of a stock plan, we'll give you 50% off a rendering of that house plan. Offer ends February 28, 2009. One discount per sale. You must present this printed offer to receive this promotion.

# 9599-U



## Craftsman

Living Area: 2505 S.F.  
Basement Area: 1183 S.F.  
Garage Area: 584 S.F.  
Two-Story Area: 90 S.F.

### Price:

**6 sets 685.80 plus tax**

*Prices are subject to change without notice.*

### *Concept through Construction...we're with you every step of the way!*

Home Designing Service, Ltd has been providing homeowners, building contractors and developers with quality home plans and superior customer service since 1945. We are a multi-disciplined designing service specializing in custom home design, renovation and addition design. Our team of designers has over 120 years of design experience and their knowledge and expertise will help guide you through the entire design process and even continue to support you once construction has begun.

### Services

- Stock Home Plans
- Custom Home Design
- Addition & Renovation Design
- 3D Architectural Renderings
- Kitchen & Bathroom Design
- Shed & Garage Design
- Universal (Accesible) Design
- Model Energy Code Reports
- High Wind Zone Reports

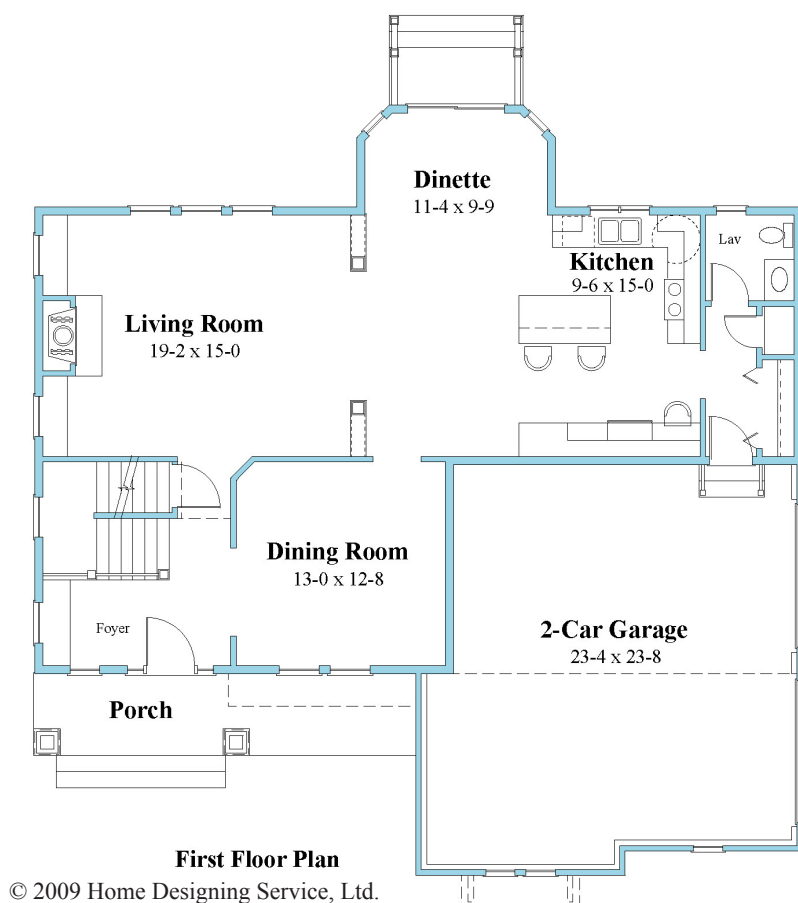
**Call: 860.724.5522**

**Email: [inquiries@homedesigningservice.com](mailto:inquiries@homedesigningservice.com)**

## Features of this month's plan

Today the craftsman style home is proving to be just as inspiring, functional, durable and austere beautiful as it was some 80 years ago. That's why we have chosen a beautiful, yet modest, craftsman style home as the February Plan of the Month. At just over 2500 sqft of living area, this home is sure to meet the needs of your family without going overboard.

As you approach the home from the walkway, you'll be greeted by the unmistakable characteristics of the craftsman style, beautifully adorned front end gables and a covered porch that's sure to provide hours of relaxation in the warm months and protection from the elements during the winter. Open the front door and you will enter into a bright, oversized two story foyer, featuring a large stairway to the second level. Now, move through the foyer into the main living area. The fireplace is the star of this craftsman living room that also features 2 half walls that provide separation from the large kitchen and dinette while still giving the entire living area an uncluttered and spacious feel. The formal dining room will offer you plenty of space for entertaining your family and friends.



The 2 bay garage will provide you with plenty of space for vehicles and storage, and it's thoughtfully designed side entrances enhance the curb appeal of this home. Now, let's move to the second level. The showpiece of the second floor is your new master bedroom. Your master bedroom features an enormous walk-in closet and a luxurious master bath with walk-in shower and a whirlpool tub for melting away the stresses of the day. Are the kids tired of sharing rooms? Maybe you've decided to finally work from home, or setup a room just for your favorite hobbies. Three more large bedrooms will provide plenty of space for the kids, guests, a home office, or a hobby room. And finally, there's no more need to lug heavy laundry up and down stairs in this house, the laundry area is conveniently located on the second level.

So, imagine yourself enjoying the richness, beauty and warmth of your new craftsman style home. Its unique design will make you the envy of your neighbors and you'll have the joy of owning a beautiful new home without breaking your budget. Yes, with this home, you can have your cake and eat it too!

